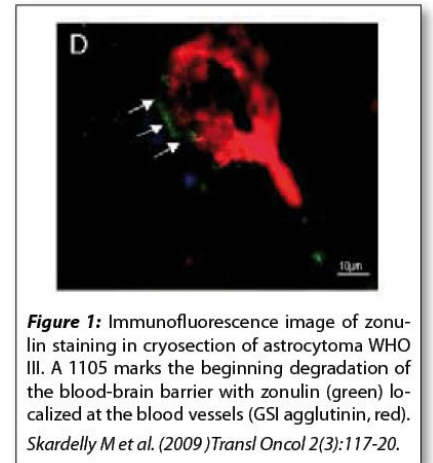


## Data Sheet

# HUMAN ZONULIN

## ANTIBODY, POLYCLONAL

<b>Catalog no.:</b>	A1105.1 / A1105.2
<b>Immunogen:</b>	Synthetic human intestinal Zonulin (aa 8-15) KLH-conjugated (GGVLVQPG)
<b>Host:</b>	Rabbit
<b>Matrix:</b>	Serum
<b>Specificity:</b>	Human intestinal Zonulin
<b>Contents:</b>	20 µl / 100 µl (lyophilized) Resuspend in 20 µl / 100 µl aqua bidest.
<b>Known applications:</b>	ELISA (1:1000), immunohistochemistry (paraffin sections, 1:300; cryosections) <sup>1, 2</sup>  This antibody has not been tested for use in all applications. This does not necessarily exclude its use in non-tested procedures. The stated dilutions are recommendations only. End users should determine optimal dilutions in their system using appropriate negative/positive controls.
<b>Store at:</b>	2-8 °C (lyophilized); - 20 °C (dissolved)  Repeated thawing and freezing must be avoided
<b>References:</b>	<ol style="list-style-type: none"> <li>1. Skardelly M, Armbruster FP, Meixensberger J, Hilbig H (2009) Expression of Zonulin, c-kit, and Glial Fibrillary Acidic Protein in Human Gliomas. <i>Transl Oncol</i> 2(3): 117-120.</li> <li>2. Wex T, Monkemuller K, Kuester D, Fry L, Kandulski A, Malferteiner P (2009). Zonulin is not increased in the cardiac and esophageal mucosa of patients with gastroesophageal reflux disease. <i>Peptides</i> 30(6): 1082-1087.</li> </ol>
<b>Last updated on:</b>	3 July 2020



**For research use only**

**Publishing research using A 1105? Please let us know so that we can cite your publication as a reference.**

